

for more information please contact

Jeff Oesterblad
+1 858 546 2637
Lic. 01516014
jeff.oesterblad@cbre.com

Lars Eisenhauer
+1 760 438 8534
Lic. 01372911
lars.eisenhauer@cbre.com

Mike Hoeck
+1 858 646 4700
Lic. 01386247
mike.hoeck@cbre.com

the Campus

ON VILLA LA JOLLA

the Campus
ON VILLA LA JOLLA

CBRE

4365 Executive Drive
Suite 1600
San Diego, CA 92121
cbre.com/sandiego

© 2016 CBRE, Inc. This information has been obtained from sources believed reliable. We have not verified it and make no guarantee, warranty or representation about it. Any projections, opinions, assumptions or estimates used are for example only and do not represent the current or future performance of the property. You and your advisors should conduct a careful, independent investigation of the property to determine to your satisfaction the suitability of the property for your needs.

CBRE



the Campus

ON VILLA LA JOLLA

8950 VILLA LA JOLLA DRIVE LA JOLLA, CA 92037
 Intersection of La Jolla Village Drive/Villa La Jolla Drive

Project Summary

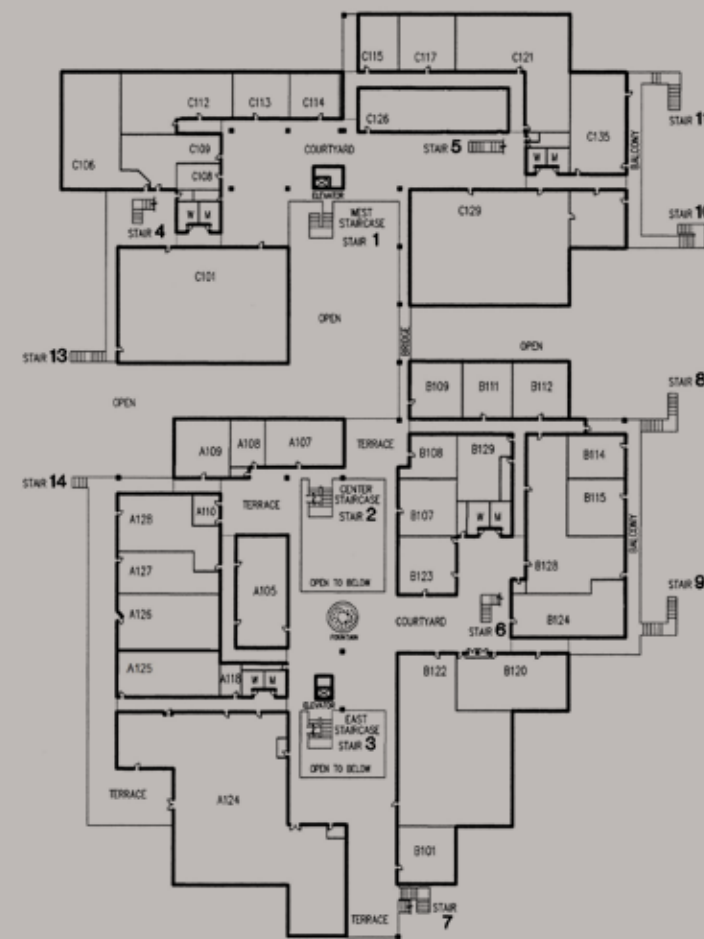
Lease Rate	\$3.95/SF Full Service Gross
TI Allowance	Negotiable
Parking Ratio	3.5/1,000 USF

Features

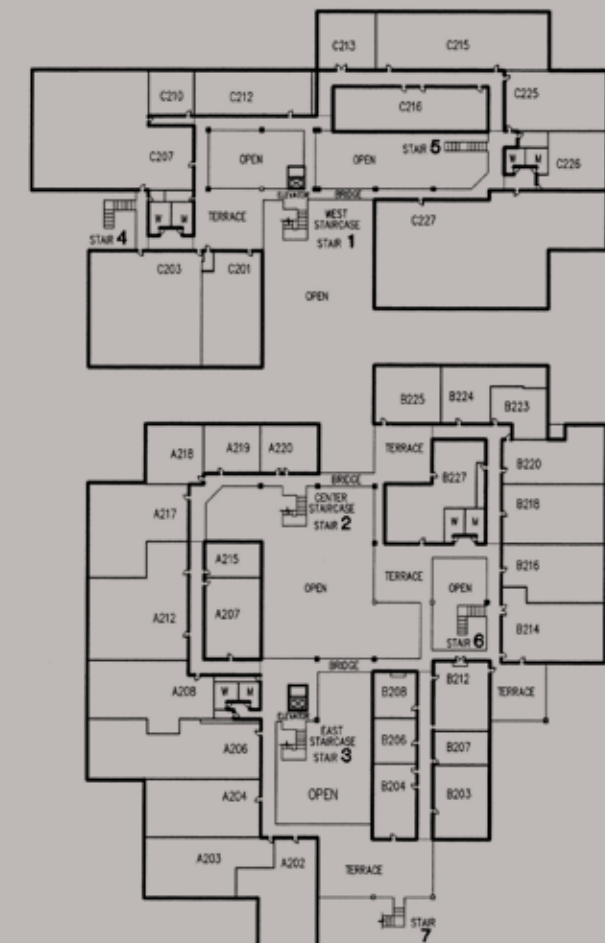
- Immediate access to Interstate 5
- Highly responsive and tenant-friendly management team
- Decidedly sought-after La Jolla address
- Within walking distance to over 20 restaurants
- Operable windows

FLOOR PLATES

First Floor



Second Floor



Suite Number	Suite RSF	Availability
B101	1,237	Now
C101	7,541	Now
C110/C112	2,106	Now
C114	959	Now
C126	2,847	11/1/16
C135/C137	2,230	Now
C212	1,924	Now
C215	3,760	Now
C216	2,831	Now
C225	2,252	Now
C226	1,203	12/1/16
C227	8,430	Now